



SWOS

Satellite-based Wetland
Observation Service

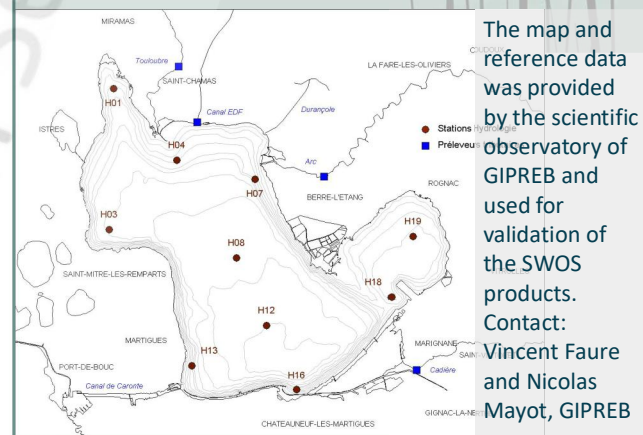
SWOS Water quality products for site Étang de Berre, France



Camargue and Étang de Berre from space, Sentinel-2, 2018-07-09

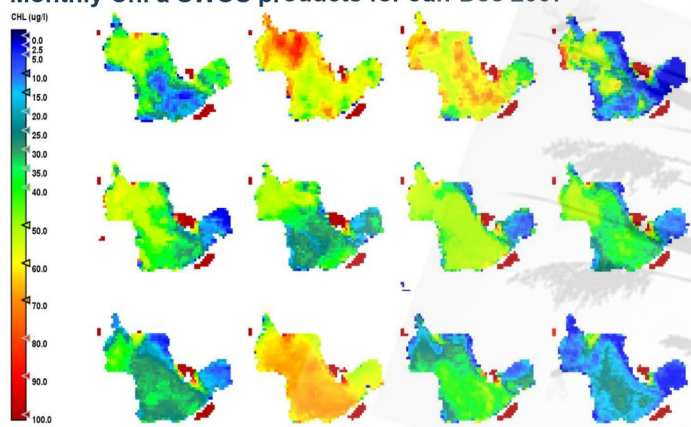
Étang de Berre (ÉdB) is a lagoon on the Mediterranean coast of France, close to Marseille. ÉdB is fed with fresh water from several rivers and Canal de Caronte links it to the Mediterranean Sea. ÉdB lagoon is heavily modified by man.

The lagoon is regularly and frequently sampled since 1994 by GIPREB Syndicat Mixte. GIPREB is involved in rehabilitation of the aquatic environment of ÉdB in order to recreate a well balanced ecosystem

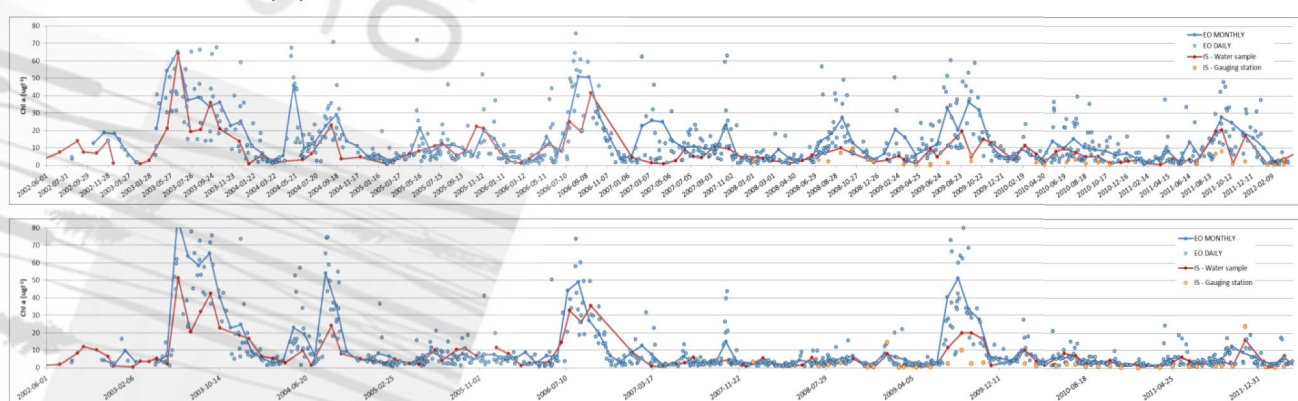


Production and validation of ENVISAT MERIS (300 m) chlorophyll-a data for SWOS

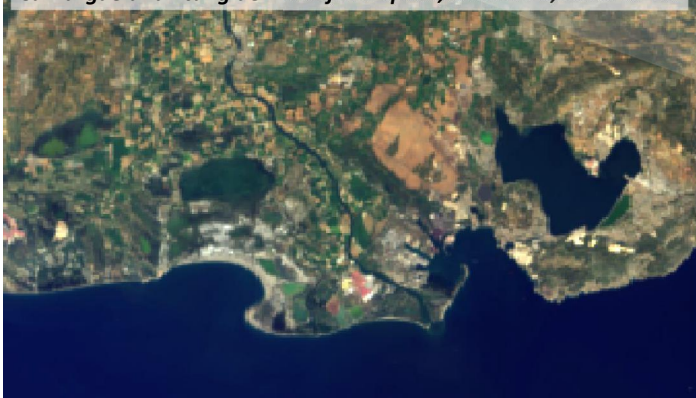
Monthly Chl a SWOS products for Jan-Dec 2007



Monthly and daily MERIS based Chl a estimates (EO) and field based measurements from water samples and multiparameter probe (IS) for station H03 and H19.



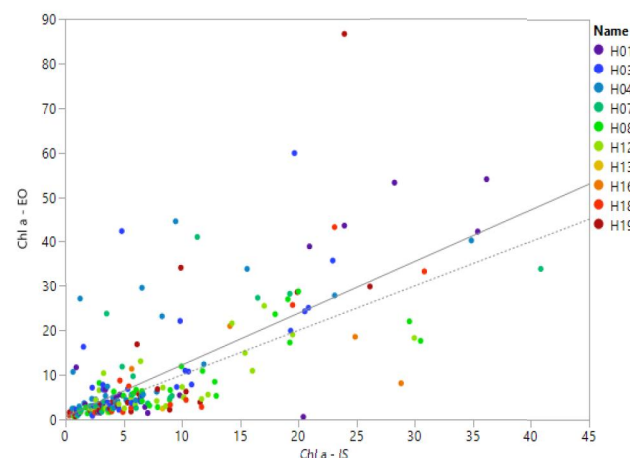
Camargue and Étang de Berre from space, Sentinel-3, 2018-07-26



Match up analysis

205 matchups, i.e. same day EO and In Situ (IS) measurements, could be extracted over the 10 year period of available MERIS data. Between 20-30 matchups per stations could be extracted except for stations H13 and H16, which are located too close to land with respect to the image resolution.

The data indicates a slight underestimation of concentrations between 0-12 ug/l (IS), while concentrations >12 ug/l (IS) more often are overestimated..



Wetlands give us ecosystem services for free, SWOS provides infrastructure for decision making and action



This project has received funding from the European Union's Horizon 2020 research and innovation programme under grant agreement No 642088.

